

PUERTO NUEVO NOTRE DAME BRIDGE RIVERBED DELINEATION SURVEY # 20-230 COMMONWEALTH OF PUERTO RICO

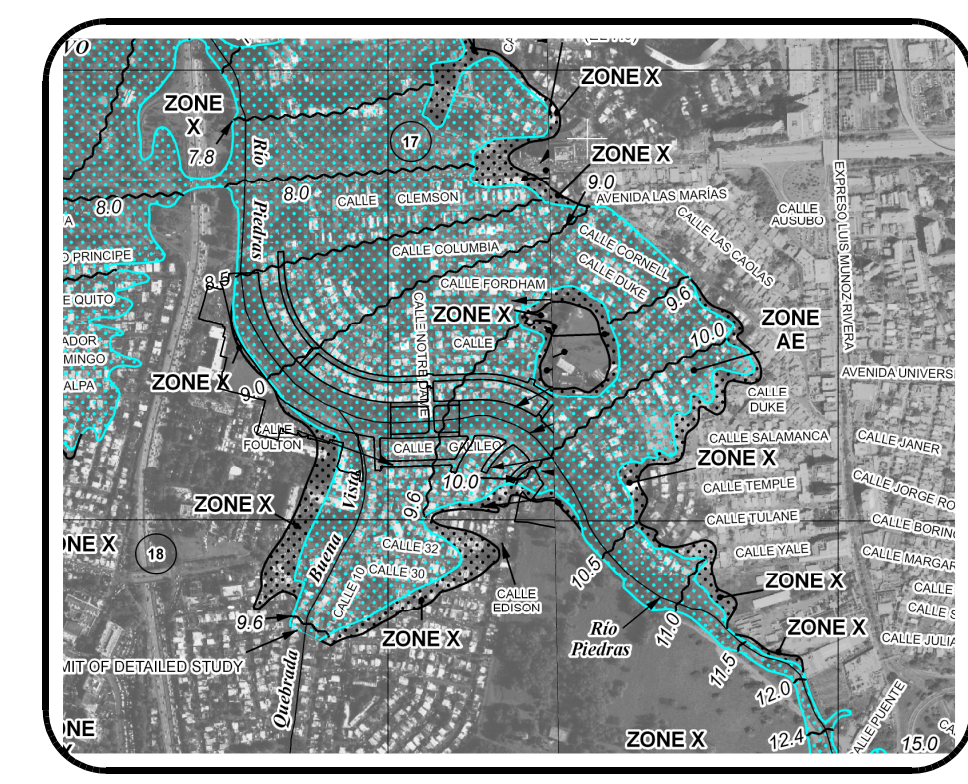
VICINITY MAP

SCALE 1"=1,000'



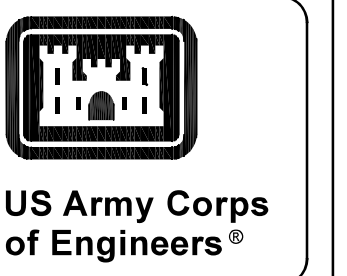
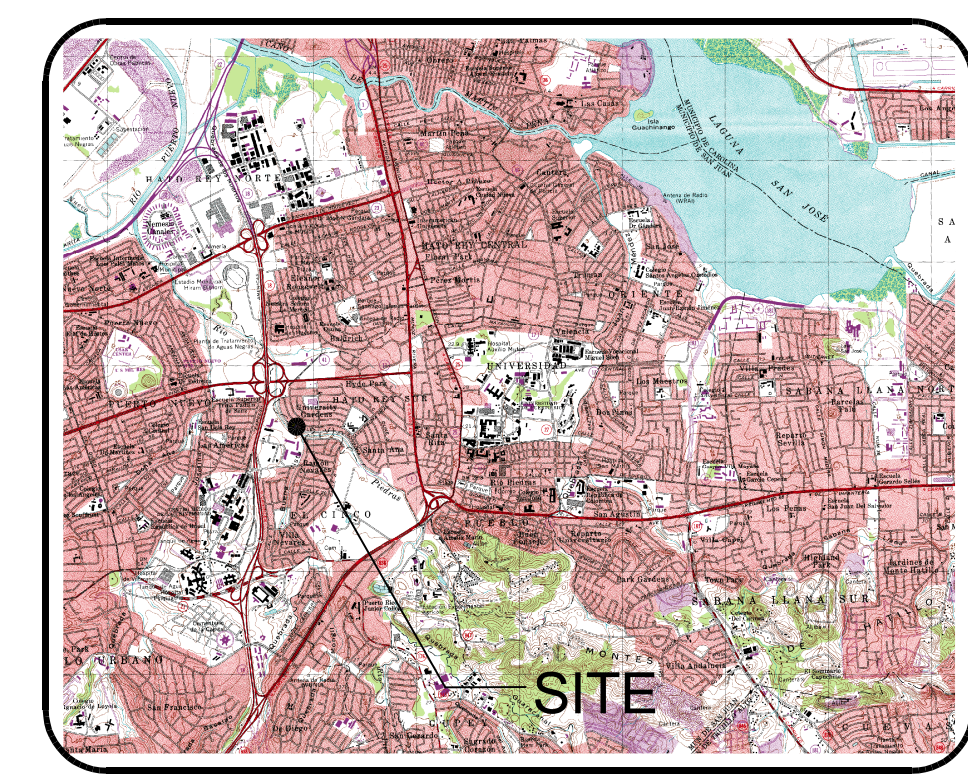
FLOOD MAP

SCALE 1"=1500'

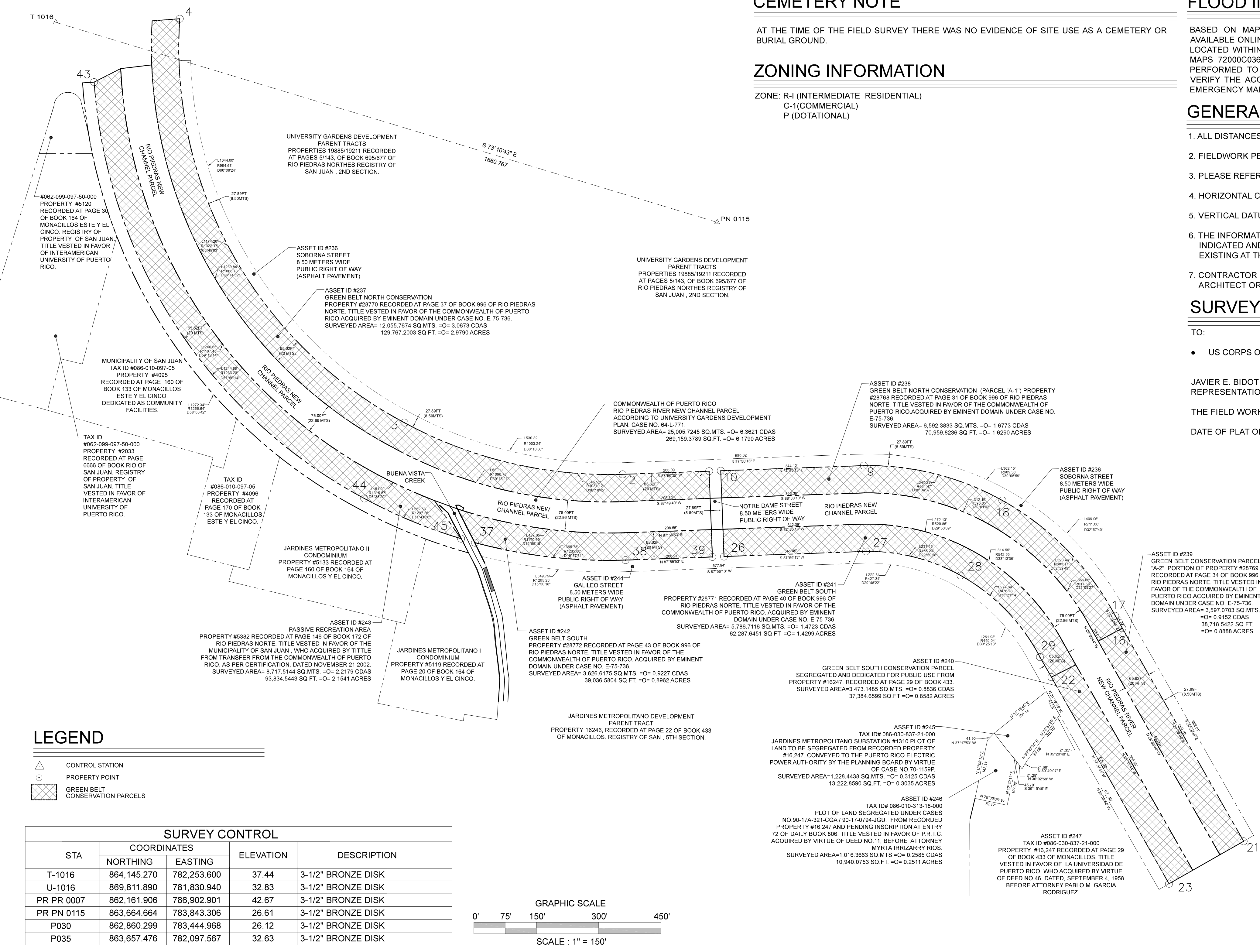


LOCATION MAP

SCALE 1"=2,000'



DATE	MARK	DESCRIPTION

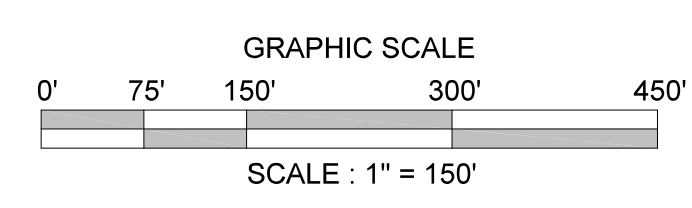


SURVEY DATA			
RIVERBED DELINEATION (COORDINATES AS SURVEYED)			
POINT	(Y) NORTH	(X) EAST	
1	863066.5625	783823.9383	
2	863059.0911	783615.9779	
Center	864089.6798	783582.7530	
CURVE DATA	ANGLE	RADIUS	
	30° 18' 45"	1031.12	
3	863183.2184	783091.2808	
Center	864085.6008	783571.4207	
CURVE DATA	ANGLE	RADIUS	
	65° 49' 03"	1022.17	
4	864153.9506	782551.5401	
10	863067.5865	783851.8022	
9	863079.9751	784195.6993	
18	862996.2802	784528.5991	
Center	862418.5932	784206.3909	
CURVE DATA	ANGLE	RADIUS	
	30° 04' 37"	661.47	
17	862718.9266	784799.9687	
16	862689.1024	784816.9540	
Center	862399.4964	784196.0750	
CURVE DATA	ANGLE	RADIUS	
	32° 59' 49"	683.17	
21	862177.2031	785108.4886	
43	864001.7532	782345.8009	
Center	864088.9361	783575.9407	
CURVE DATA	ANGLE	RADIUS	
	57° 50' 14"	1233.23	
44	863001.1641	782994.9097	
Center	864089.3111	783583.9814	
CURVE DATA	ANGLE	RADIUS	
	11° 41' 36"	1237.36	
37	862894.8919	783260.9593	
Center	864088.0908	783582.6377	
CURVE DATA	ANGLE	RADIUS	
	16° 57' 31"	1235.80	
38	862852.9499	783622.9817	
39	862860.4907	783831.7517	
26	862861.4946	783859.6208	
27	862873.7886	784200.8885	
Center	862418.5932	784206.3909	
CURVE DATA	ANGLE	RADIUS	
	29° 50' 56"	455.23	
28	862816.1412	784428.1761	
Center	862399.4964	784196.0750	
CURVE DATA	ANGLE	RADIUS	
	33° 21' 14"	476.93	
29	862619.9046	784619.0219	
22	862571.6678	784646.4935	
23	862075.1381	784929.2749	

LEGEND

- △ CONTROL STATION
- PROPERTY POINT
- ▨ GREEN BELT CONSERVATION PARCELS

SURVEY CONTROL				
STA	NORTHING	EASTING	ELEVATION	DESCRIPTION
T-1016	864,145.270	782,253.600	37.44	3-1/2" BRONZE DISK
U-1016	869,811.890	781,830.940	32.83	3-1/2" BRONZE DISK
PR PR 0007	862,161.906	786,902.901	42.67	3-1/2" BRONZE DISK
PR PN 0115	863,664.684	783,843.308	26.61	3-1/2" BRONZE DISK
P030	862,860.299	783,444.988	26.12	3-1/2" BRONZE DISK
P035	863,657.476	782,097.567	32.63	3-1/2" BRONZE DISK



U.S. ARMY CORPS OF ENGINEERS
JACKSONVILLE DISTRICT
701 SAN MARCO BLDY
JACKSONVILLE, FL 32207

JAVIER E. BIDOT
Associates, P.C.
Lead Surveyor & Consultant

PUERTO NUEVO NOTRE DAME BRIDGE
TOPOGRAPHIC, HYDROGRAPHIC
BOUNDARY & SUE SURVEY
SAN JUAN PUERTO RICO

PUERTO NUEVO NOTRE DAME BRIDGE
RIVERBED DELINEATION

SHEET ID
V-101